

Lumify Budgie Cart

3-0205

Cart with Worktop, Power supply holder, Handle, and choosable Display mount or Tablet mount



Ergonomic
Simple, light weight,
easy to use



Easy to clean
Clean surfaces with
minimal dirt traps



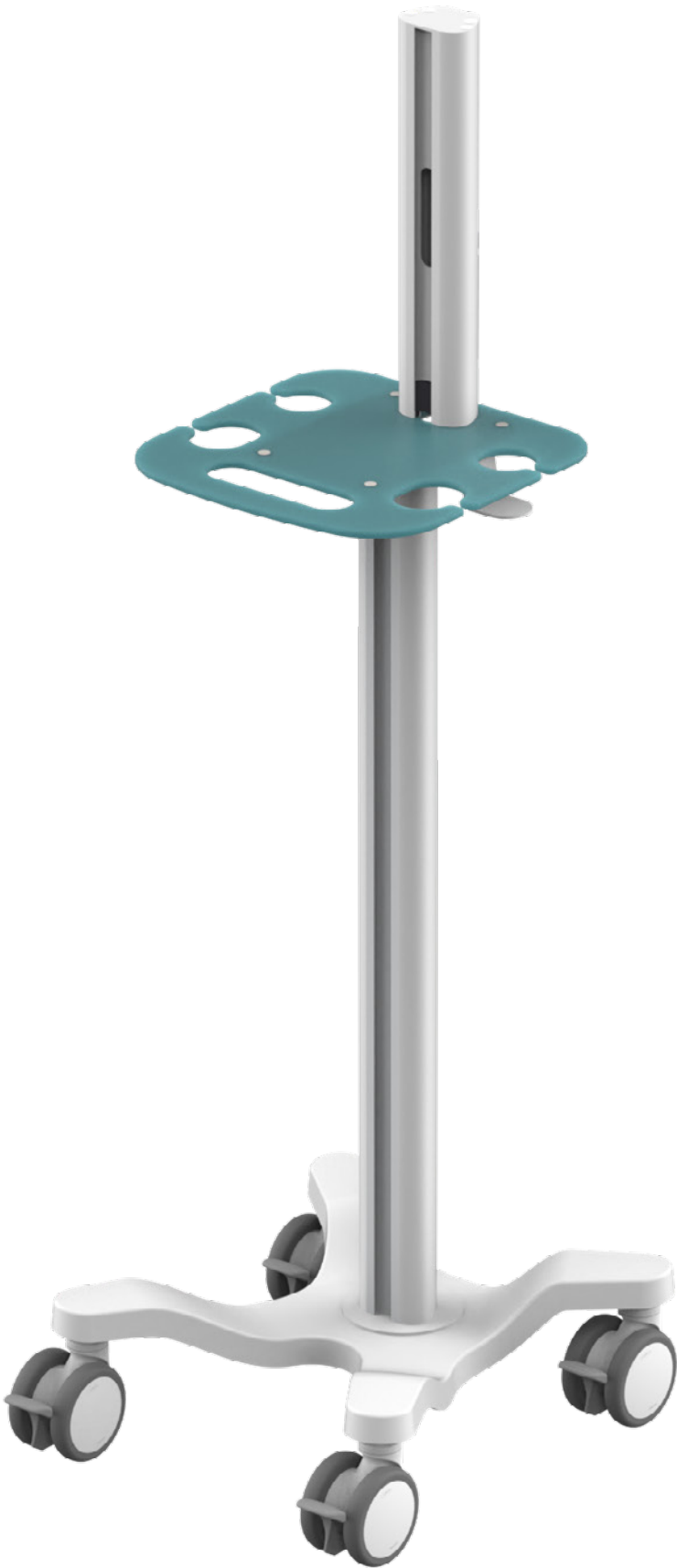
Multi purpose
Customise with
accessories



Durable
Lifetime warranty



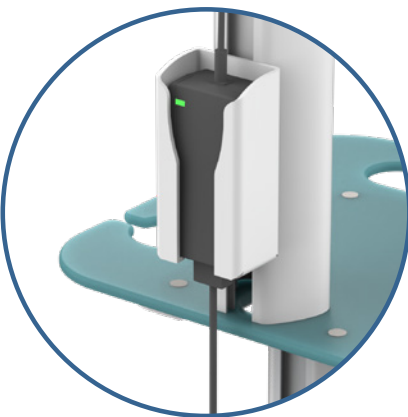
Quick setup
Supplied fully
assembled



Can be ordered with
display or tablet mount



Cutouts for rubber holders
and accessories



Optional power supply
holder



MOUNTING OPTIONS



VES2
VESA Mount



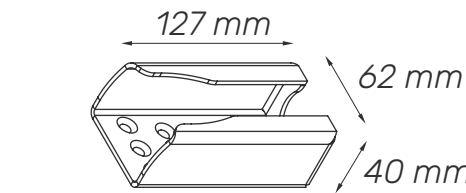
TM2
Tablet mount



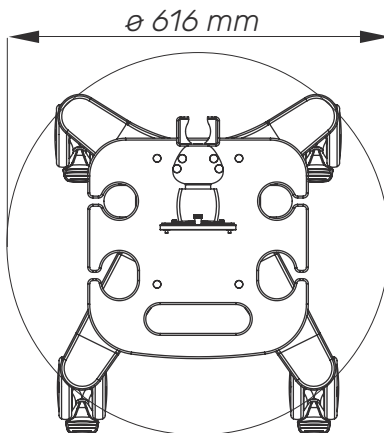
TM2-XL
Large tablet mount



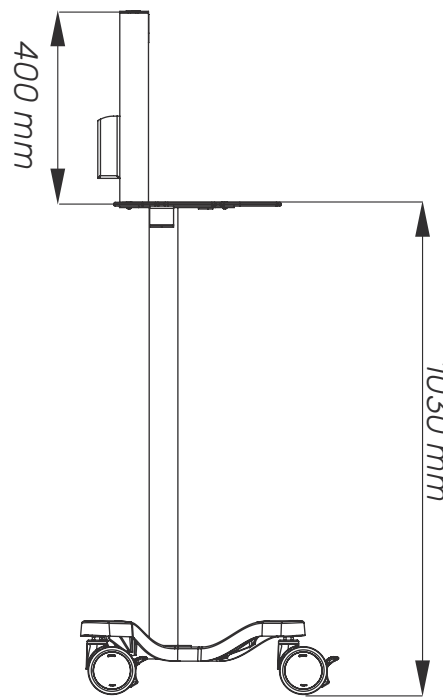
TECHNICAL DATA



PSU Holder (optional)



Base



Side

PURPOSE DESIGNED

Specially designed for ultrasound imaging.

The cart can be ordered either with display mount or tablet mount. We added a power supply holder for the device required. The work surface has handle to move the cart, in the cut outs you can place your accessories.

ACCESSORIES



ST2
Metal basket



ST3
Plastic basket



CH1
Cable hook



PSH2
Power supply holder



SR1
Rubber scanner holder



SR2
Rubber scanner holder



SR3
Rubber scanner holder



Mechanical data	
Wheelbase dimension	616 mm (diameter)
Mounting plate	Width: 350 mm Height: 350 mm
Wheels/locking	2 lockable, 100 mm diameter
Loading capacity	25 kg
Construction	
Main material	Aluminium, PMMA
Color	
White (RAL 9016)	
Certificates	
Certificates conforms to	IEC60601-1:2012 (Edition 3)
CE	Rohs compliant