

# Lumify Cart

3-0206

Height adjustable cart with Worktop, Power supply holder, Handle and choosable Display mount or Tablet mount



**Ergonomic**  
Simple, light weight,  
easy to use



**Easy to clean**  
Clean surfaces with  
minimal dirt traps



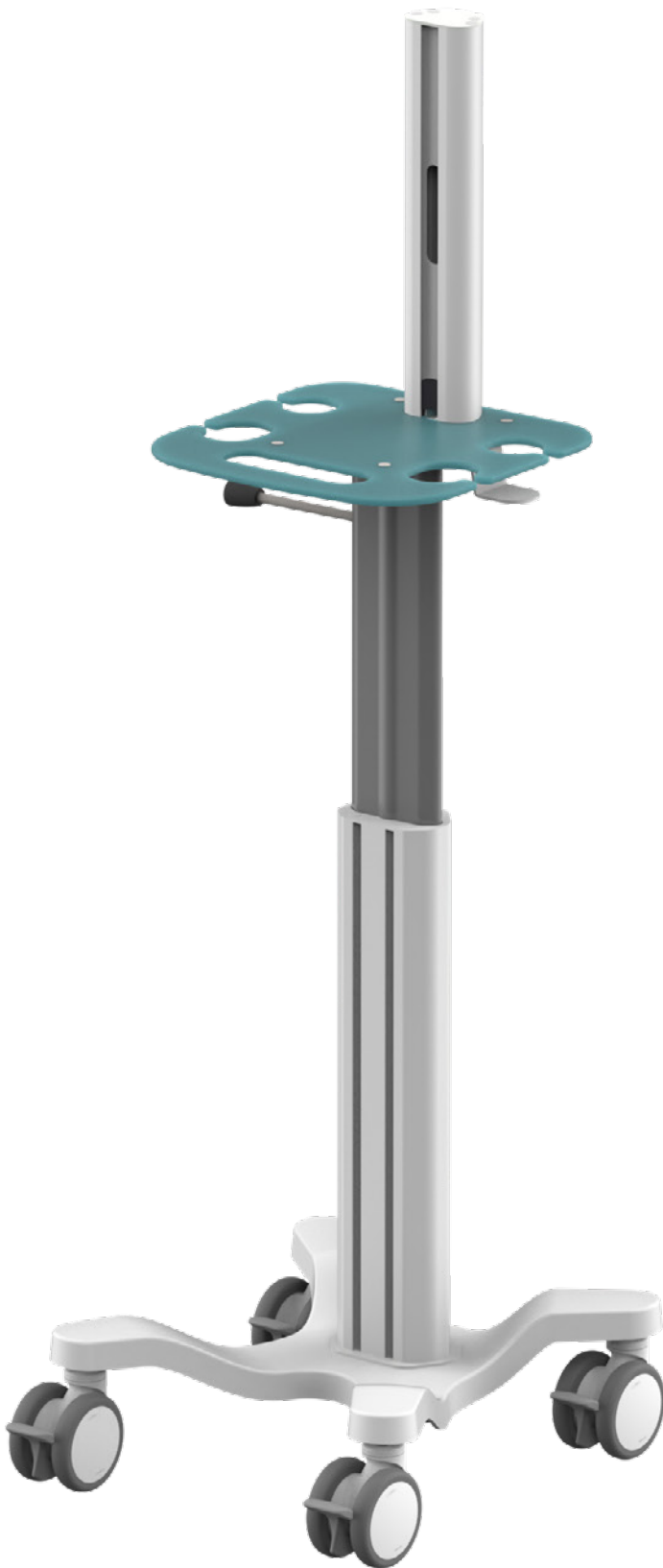
**Multi purpose**  
Customise with  
accessories



**Durable**  
Lifetime warranty



**Quick setup**  
Supplied fully  
assembled



## MOUNTING OPTIONS



**VES2**  
VESA Mount



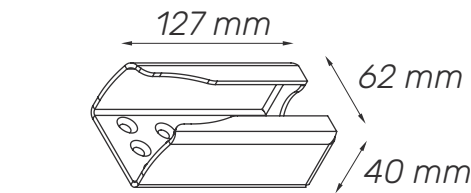
**TM2**  
Tablet mount



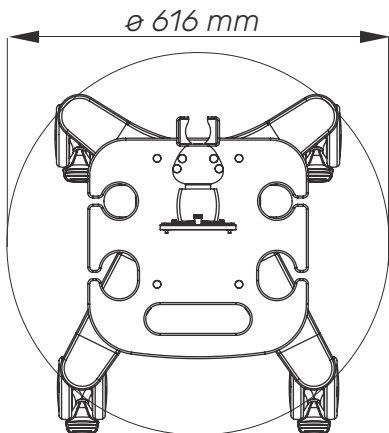
**TM2-XL**  
Large tablet mount



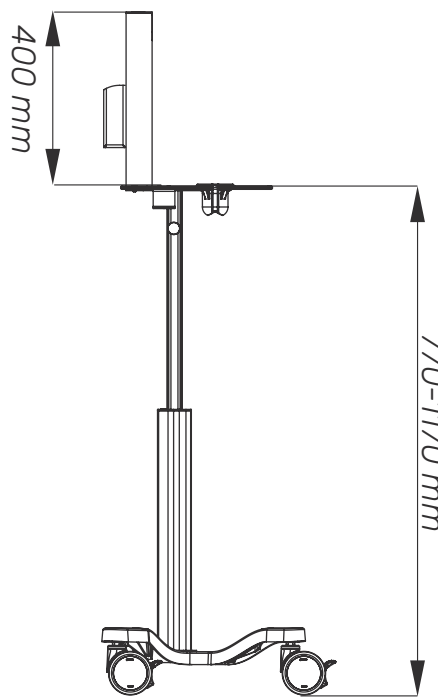
## TECHNICAL DATA



PSU Holder (optional)



Base



Side

## PURPOSE DESIGNED

**Specially designed for ultrasound imaging.**

The cart can be ordered either with display mount or tablet mount. We added a power supply holder for the needed device. The worksurface has handle for moving the cart, in the cut outs you can place your accessories. Can be ordered with rubber scanner holders in the cut outs.

## ACCESSORIES



**ST2**  
Metal basket



**ST3**  
Plastic basket



**CH1**  
Cable hook



**PSH2**  
Power supply holder



**SR1**  
Rubber scanner holder



**SR2**  
Rubber scanner holder



**SR3**  
Rubber scanner holder



### Mechanical data

Wheelbase dimension	616 mm (diameter)
Mounting plate	Width: 350 mm Height: 350 mm
Wheels/locking	2 lockable, 100 mm diameter
Loading capacity	25 kg

### Construction

Main material	Aluminium, PMMA
---------------	-----------------

### Color

White (RAL 9016)	
------------------	--

### Certificates

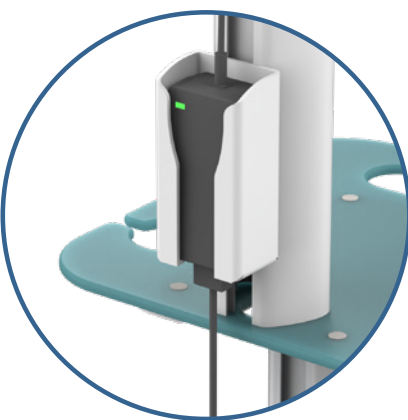
Certificates conforms to	IEC60601-1:2012 (Edition 3)
CE	Rohs compliant



Can be ordered with  
display or tablet mount



Cutouts for rubber holders  
and accessories



Optional power supply  
holder