

Display mount Cart

CHA4-4

Height adjustable cart with work surface, display mount and keyboard tray for computer use. Up to 24".



Ergonomic
Simple, light weight,
easy to use



Easy to clean
Clean surfaces with
minimal dirt traps



Multi purpose
Customise with
accessories



Durable
Lifetime warranty



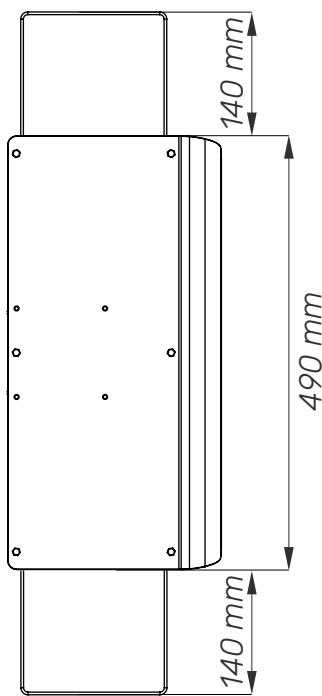
Quick setup
Supplied fully
assembled



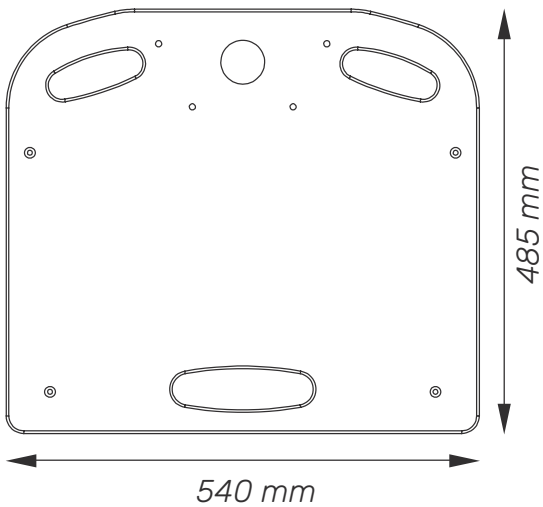
PURPOSE DESIGNED

Designed for display faor all-in-one computer mounting.
The cart can be your perfect choice for computer or display use. We added a keyboard tray with a left or right handed mouse pad. The worksurface has a handle for moving the cart.

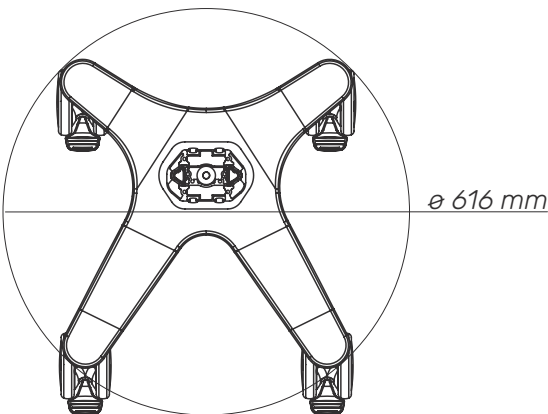
TECHNICAL DATA



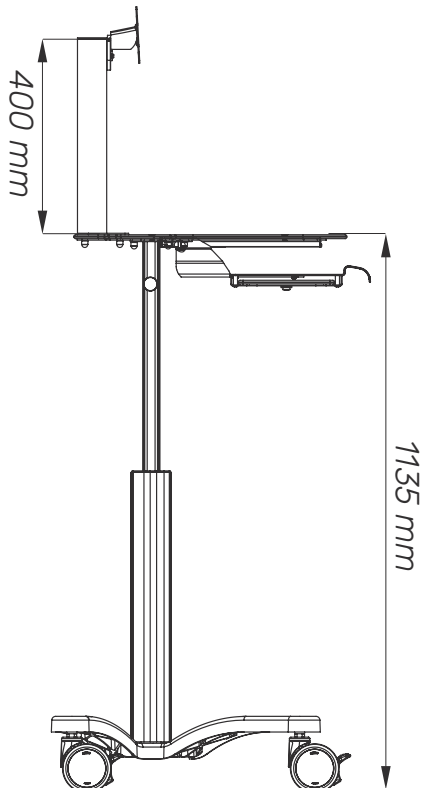
Keyboard tray



Work surface



Base



Side

ACCESSORIES



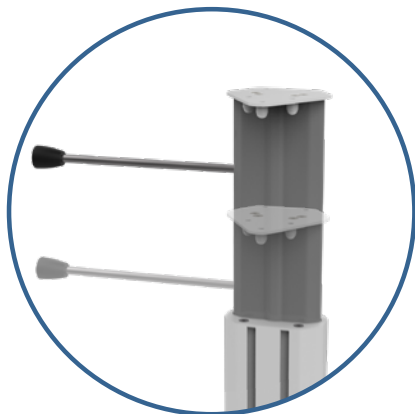
ST2
Metal basket



S2
Shelf



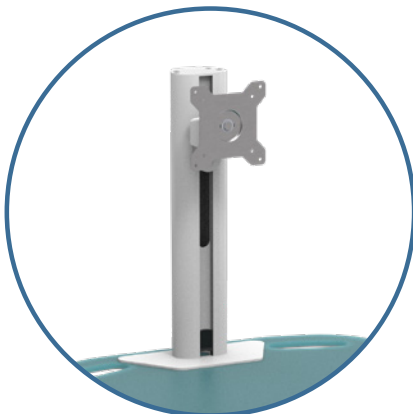
Rubber
inserts



Worktop for device
and handle



Keyboard tray with mouse
pad, left or right handed



Tiltable, rotatable, height
adjustable Display Mount

Mechanical data	
Wheelbase dimension	616 mm (diameter)
Worktop	Width: 540 mm Height: 485 mm
Wheels/locking	2 lockable, 100 mm diameter
Loading capacity	25 kg
Construction	
Main material	Aluminium, PMMA
Color	
White (RAL 9016)	
Certificates	
Certificates conforms to	IEC60601-1:2012 (Edition 3)
CE	Rohs compliant