

# VESA Gas Spring Arm

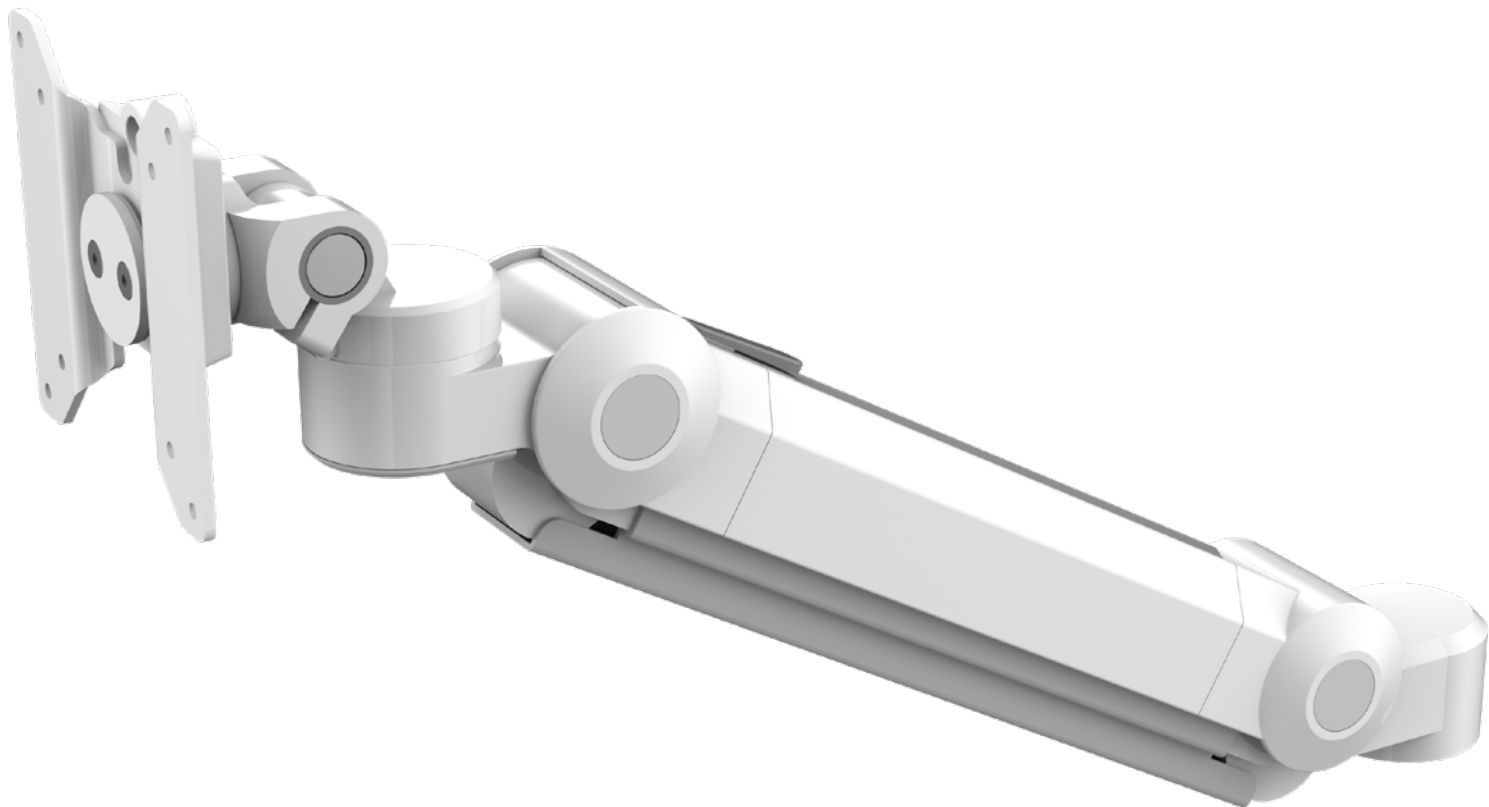
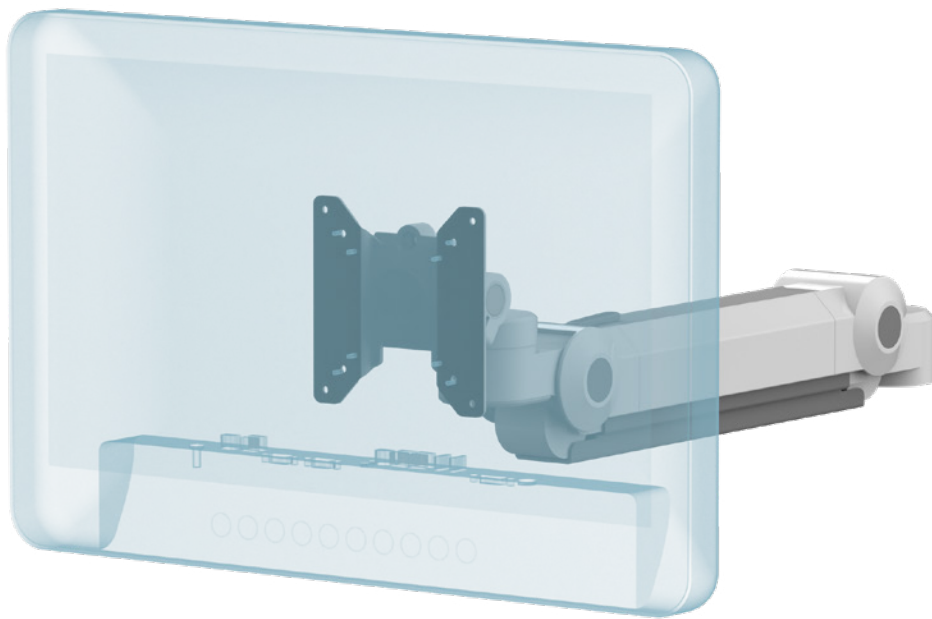
SNA2-XXX-061-VM

Rotatable, liftable and tiltable heavy duty gas spring powered arm with VESA mount.



## DESIGNED FOR DISPLAYS

**Specially designed for Displays with VESA mounting**  
The arm is designed to fit any display with 75x75 mm or 100x100 mm hole pattern.



## MOUNTING OPTIONS (XXX)



**VWM**  
Wall mounting



**HDR**  
DIN Rail



**H1**  
Handle

## ACCESSORY



**Ergonomic**  
Constant force joint that enables a safe setup



**Multi purpose**  
Wide range of devices are compatible

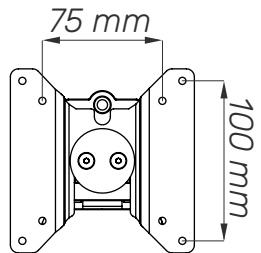


**Easy to clean**  
Clean surfaces with minimal dirt traps

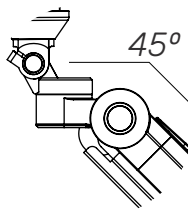


**Durable**  
2 year warranty

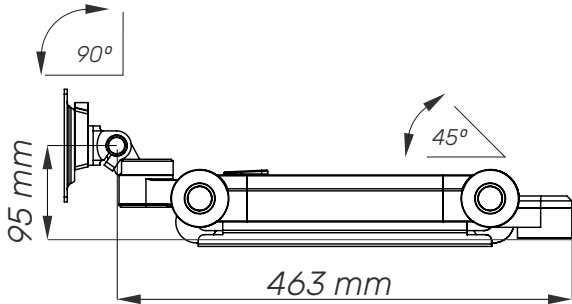
## TECHNICAL DATA



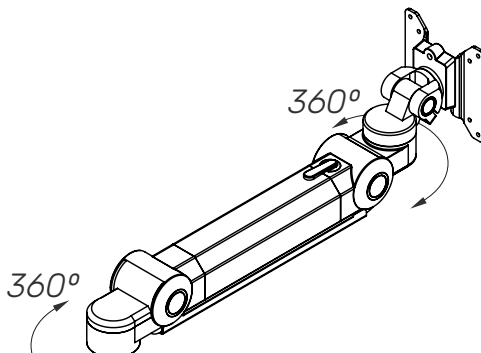
VESA mount



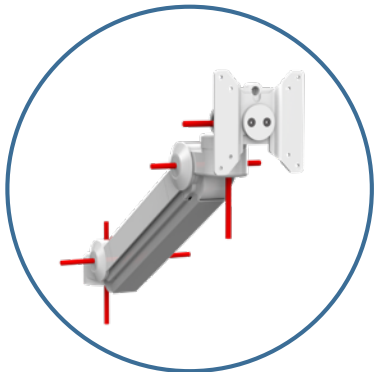
Joint angles



Side



Joint rotations



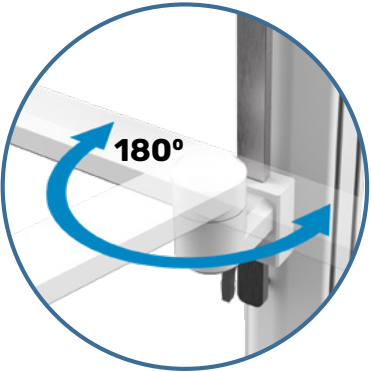
5 axes rotation



End joint torque setting



Cable management



Optional angle limitation

| Mechanical data          |                             |
|--------------------------|-----------------------------|
| Arm length               | 463 mm (until end joint)    |
| Joint rotation           | 360°                        |
| End joint rotation       | 90°                         |
| Max rise or fall         | 45°                         |
| Mounting options         | Column, Wall, DIN Rail      |
| Loading capacity         | 16 kg                       |
| Construction             |                             |
| Main material            | Aluminium, PMMA             |
| Color                    |                             |
| White (RAL 9016)         |                             |
| Certificates             |                             |
| Certificates conforms to | IEC60601-1:2012 (Edition 3) |
| CE                       | Rohs compliant              |