

Efficia/Sure Signs gas spring arm

SNA2-XXX-061-QR

Rotatable, liftable and tiltable heavy duty gas spring powered arm with Quick Release mount.

Designed for Philips Efficia and Sure Signs/Vital Signs series:

- CM100/ CM120/ CM150
- VS2+/ VSi/ VS4



DESIGNED FOR Philips Efficia and Sure Signs/Vital Signs series

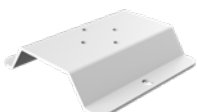
Specially designed for Efficia, and SureSigns/Vital Sign devices.

The quick release mount allows you to mount any of the listed devices.

ACCESSORIES



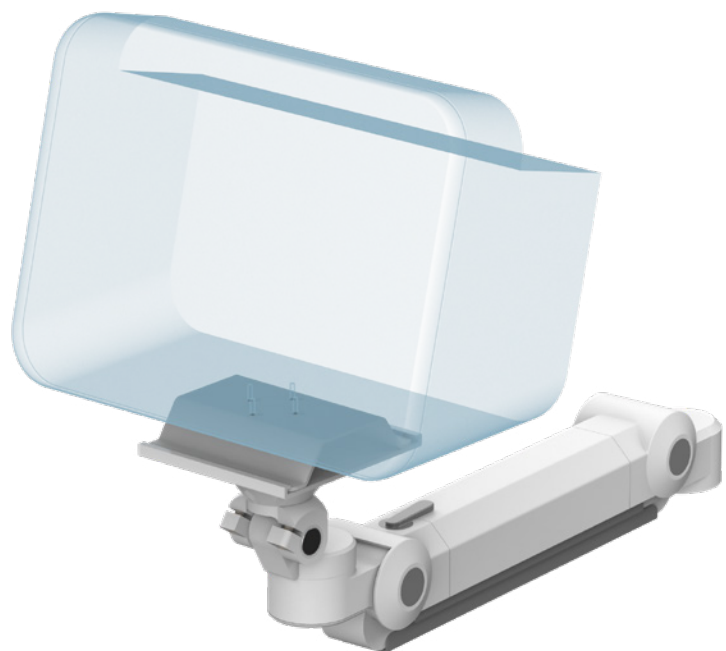
H1
Handle



QRA1
Quick release plate



QRA5
Quick release plate



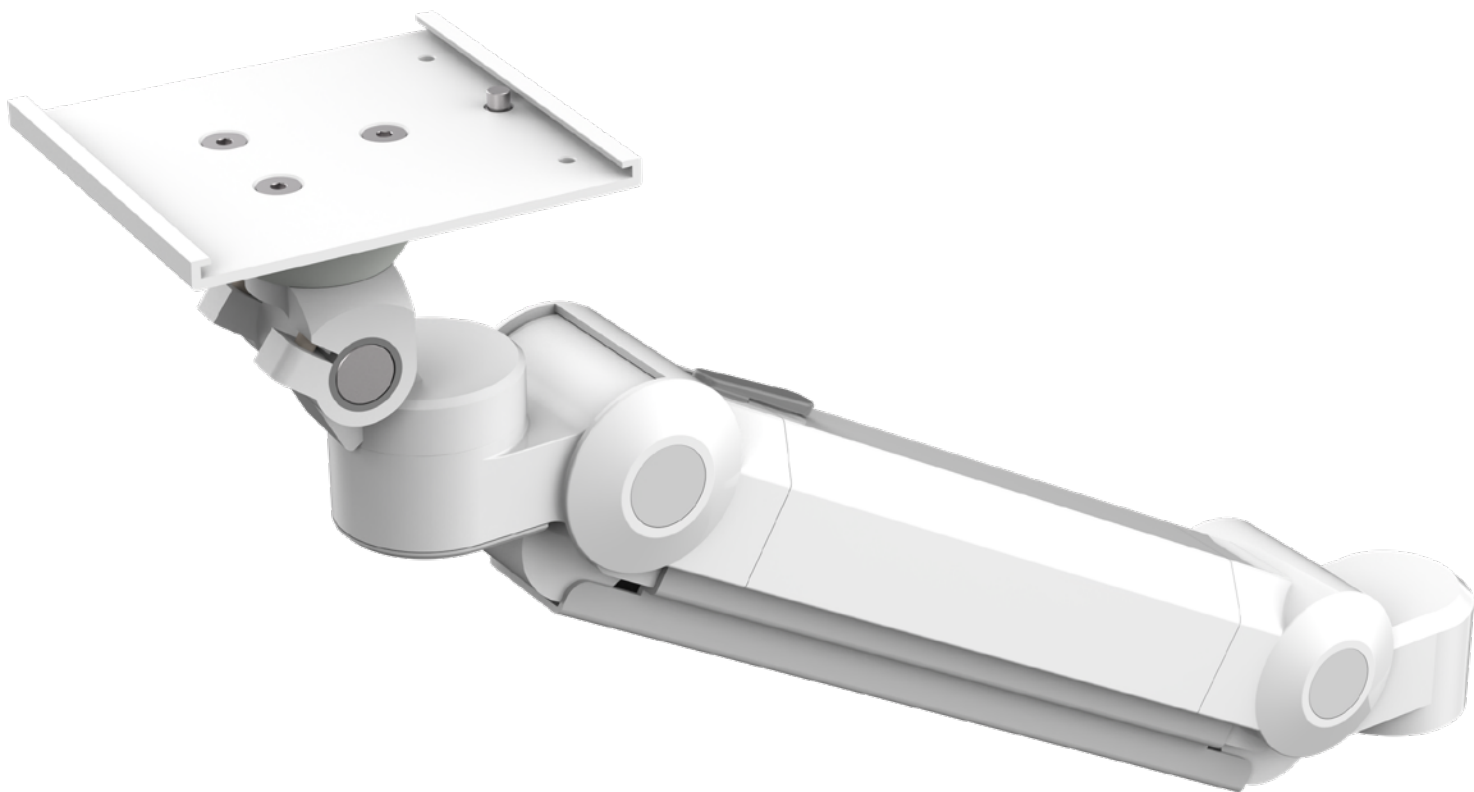
MOUNTING OPTIONS (XXX)



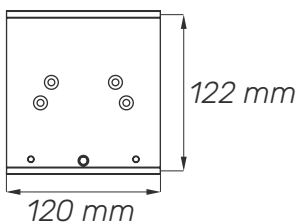
VWM
Wall mounting



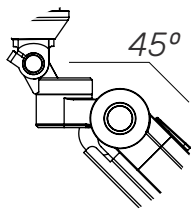
HDR
DIN Rail



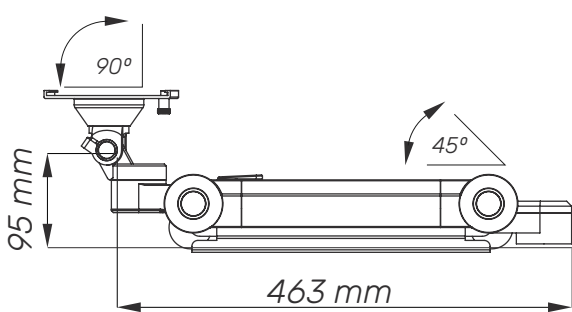
TECHNICAL DATA



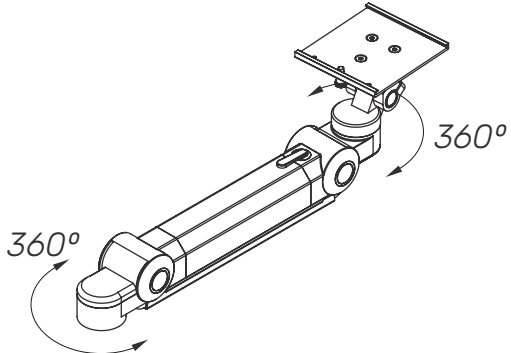
QR mount



Joint angles



Side



Joint rotations



Ergonomic
Constant force joint that enables a safe setup



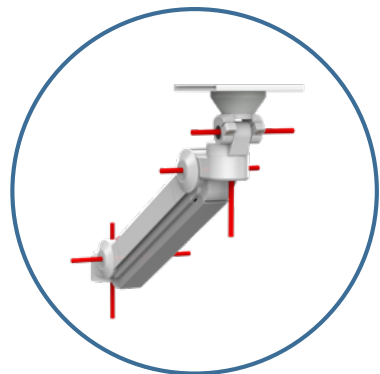
Multi purpose
Wide range of devices are compatible



Easy to clean
Clean surfaces with minimal dirt traps



Durable
2 year warranty



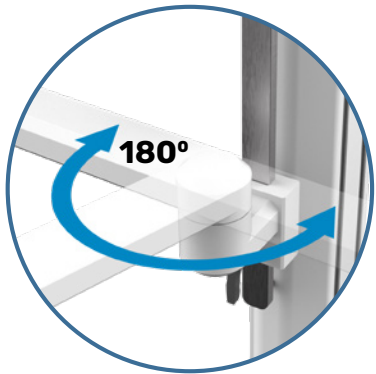
5 axes
rotation



End joint
torque setting



Cable
management



Optional
angle limitation

Mechanical data	
Arm length	463 mm (until end joint)
Joint rotation	360°
End joint rotation	90°
Max rise or fall	45°
Mounting options	Column, Wall, DIN Rail
Loading capacity	16 kg
Construction	
Main material	Aluminium, PMMA
Color	
White (RAL 9016)	
Certificates	
Certificates conforms to	IEC60601-1:2012 (Edition 3)
CE	Rohs compliant